

For more detailed information watch the audio-visual presentation at the East Gippsland Landcare Network or the Lakes Entrance Community Landcare websites

**"It's a mistake to assume that having a desert around your house will make you safe."**

Lesley Corbett, Safer Gardens – Plant Flammability & Planning for Fire

**"Areas that are open or have been fully cleared, allow embers to pass through freely without being obstructed, and can create strong winds at ground level."**

CSIRO's Justin Leonard, testimony: Victorian Bushfire Royal Commission 2009

**"Correctly selected and located trees can reduce wind speed, absorb radiant heat, and filter embers"**

CFA, Landscaping for Bushfire [www.cfa.vic.gov.au](http://www.cfa.vic.gov.au)

## GREEN FIRE-WALLS

- **Radiant heat** is the biggest risk to human life. **Fire-wise trees** can act as a physical barrier from radiant heat between you and a fire, absorbing heat without burning in the first wave of fire.
- **Ember attack** is the most common way houses catch alight. **Fire-wise trees** can reduce wind speed and trap embers and sparks carried by the wind. **Fire-wise ground covers** can catch burning embers without catching fire, slowing its travel through ground-litter.

## NATIVE PLANT NURSERIES

Snowy River Riparian Native Plants & Native Seed Suppliers 0410 006 447

Nicholson: **Wildseed Nursery Gippsland** 0419 099 925

Paynesville: **Riviera Garden Centre** 5156 7466

Orbost: **Moogji Aboriginal Council East Gippsland** 5154 2133

Maffra: **Woolenook Native Plant Nursery** 5147 1897

Mt Evelyn: **Kuranga Native Nursery** 9760 8100

## SUPPORTERS



# GREEN FIRE-WALLS FIREWISE GARDEN DESIGN



## FIRE-WISE NATIVE PLANTS OF EAST GIPPSLAND:

### TALL TREES

- **Acacia dealbata**  
Silver wattle 8 - 30m
- **Acacia melanoxylon**  
Blackwood 6 - 30m
- **Acmena smithii**  
Lilly pilly 8 - 30m
- **Brachychiton populneus**  
Kurrajong 5 - 15m
- **Elaeocarpus reticulatis**  
Blue olive berry 4 - 10m



### MEDIUM TREES

- **Bursaria spinosa**  
Sweet bursaria 1 - 8m
- **Ficus coronata**  
Sandpaper fig 5 - 12m
- **Myoporum insulare**  
Boobialla 1 - 6m
- **Myrsine howittiana**  
Muttonwood 3 - 10m
- **Pomaderris aspera**  
Hazel pomaderris 3 - 8m
- **Tristaniopsis laurina**  
Kanooka 5 - 20m



### SHRUBS

- **Adriana glabrata**  
Eastern bitter bush
- **Beyeria lasiocarpa**  
Wallaby bush
- **Correa alba**  
White correa
- **Correa reflexa**  
Native fuchsia
- **Dodonea viscosa**  
Sticky hopbush
- **Goodenia ovata**  
Hop Goodenia
- **Hakea eriantha**  
Tree hakea
- **Indigofera australis**  
Austral Indigo
- **Lasiopetalum macrophyllum**  
Shrubby Velvet Bush
- **Lomatia myricoides**  
River Lomatia
- **Myelocytes dentata**  
Tree violet
- **Solanum laciniatum**  
Kangaroo apple



### SALT BUSHES

- **Atriplex species**  
Salt bushes
- **Einadia nutans**  
Nodding saltbush
- **Rhagodia candolleana**  
Sea berry saltbush
- **Tetragonia tetragonoides**  
Warrigal greens



### STRAPPY PLANTS

- **Carex species**  
Sedges
- **Dianella species**  
Flax lilies
- **Ficinia nodosa**  
Knobby club-rush
- **Juncus species**  
Rushes
- **Lomandra species**  
Matt-rushes



### SUCCULENTS

- **Carpobrotus rossii**  
Native pigface
- **Disphyma crassifolium**  
Rounded noon-flower



### LAWN/GRASS

- **Microlaena stipoides**  
Weeping grass



### GROUNDCOVERS

- **Dichondra repens**  
Kidney weed
- **Scaevola species**  
Fan flowers
- **Viola hederaceae**  
Ivy leaf violet



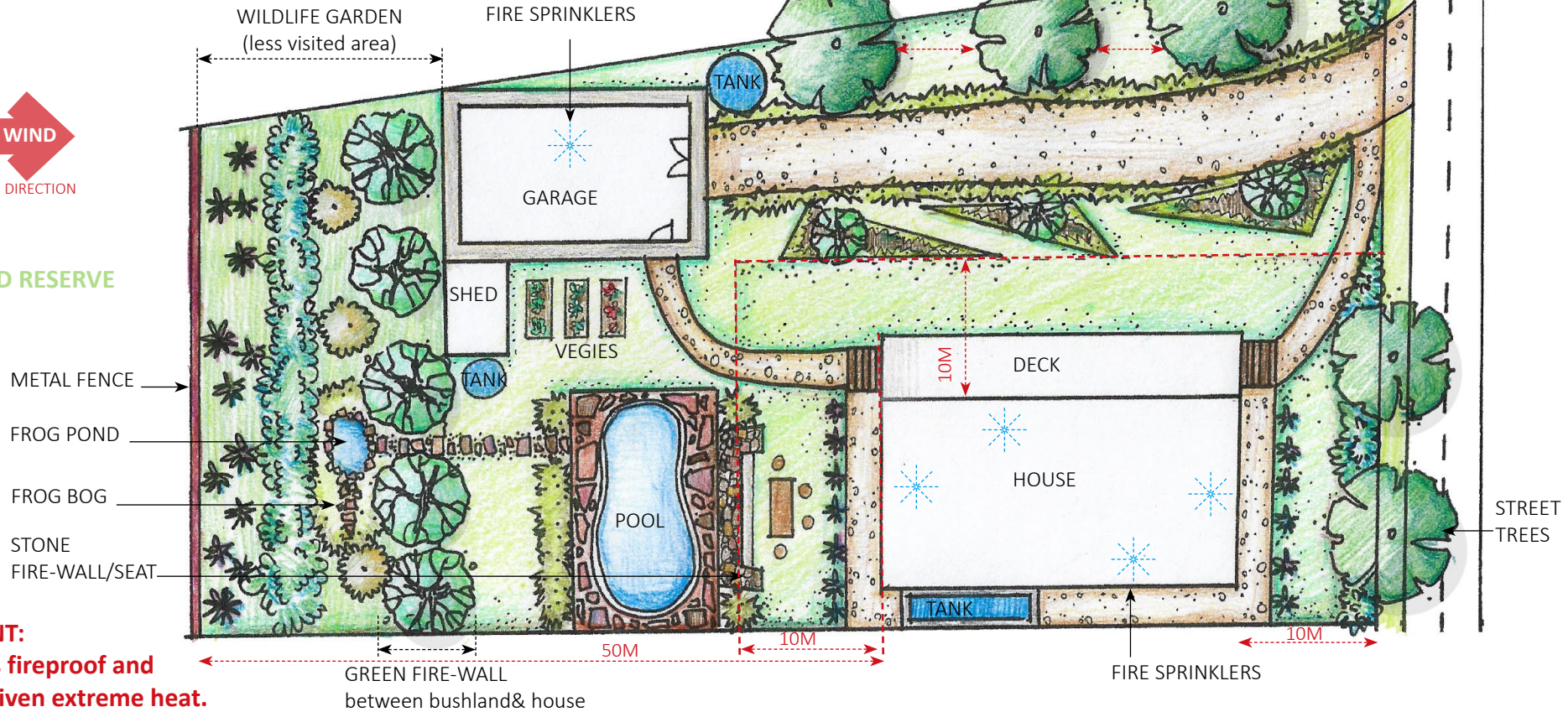
**DISCLAIMER:** We hope this information may assist you, but it is only a guide. Lakes Entrance Community Landcare and supporting partners do not guarantee that this publication is without flaw and it may not be applicable in all situations, therefore we do not accept any liability.

**IMPORTANT:** This list was compiled after cross-checking multiple sources, interviewing native plant specialists, fire-fighters and fire-affected individuals. But NO plant is fireproof and can burn given extreme heat. Always follow official advice and leave early if instructed.

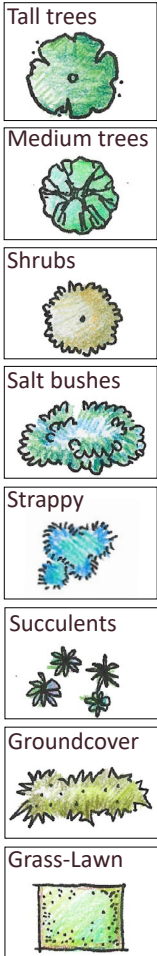
# FIRE-WISE GARDEN DESIGN



## BUSHLAND RESERVE



## FIRE-WISE:



**IMPORTANT:**  
No plant is fireproof and can burn given extreme heat.

## FIRE-WISE LANDSCAPING:

### PRINCIPLE 1 - Create defensible space near your house

- **Paths and driveways:** Use gravel, brick, concrete or noncombustibles.
- **Mulch:** Use crushed rock or pebbles, not straw or woodchips.
- **Pools, frog-bogs and ponds:** Locate between your house and likely fire-front.
- **Fences:** Replace wooden or brush with metal or brick.
- **Earth banks and stone walls:** Can be used as fire-wise landscape features.
- **Sprinkler systems and rainwater tanks:** Make installation a priority.

## FIRE-WISE GARDEN DESIGN:

### PRINCIPLE 2 – Break up fuel continuity

- Create islands of vegetation
  - Separate garden areas with mown lawn or succulent living-mulches.
  - Don't plant shrubs under trees.
- Existing Mature Trees:**
- Trim tree's canopy to prevent it overlapping another.
  - Groups of trees can remain together but separated from other groups in islands.
  - Remove low branches from large trees to 2m.

## FIRE-WISE MAINTENANCE:

### PRINCIPLE 3 – Thoughtfully place, space and care for plants

- Choose fire-wise plants
  - Near the house, only use low-growing plants e.g. succulents, salt bushes.
  - Prune branches that over-hang the house e.g. from neighbors.
  - Maintain the garden: Trim and remove dead material in fire-season.
  - Capture and direct rainwater: Keep lawns and gardens green in summer.
- New Trees:**
- Space trees at least 1.5 x their mature height away from the house.
  - Plant trees apart to allow at least 2m between mature canopies.